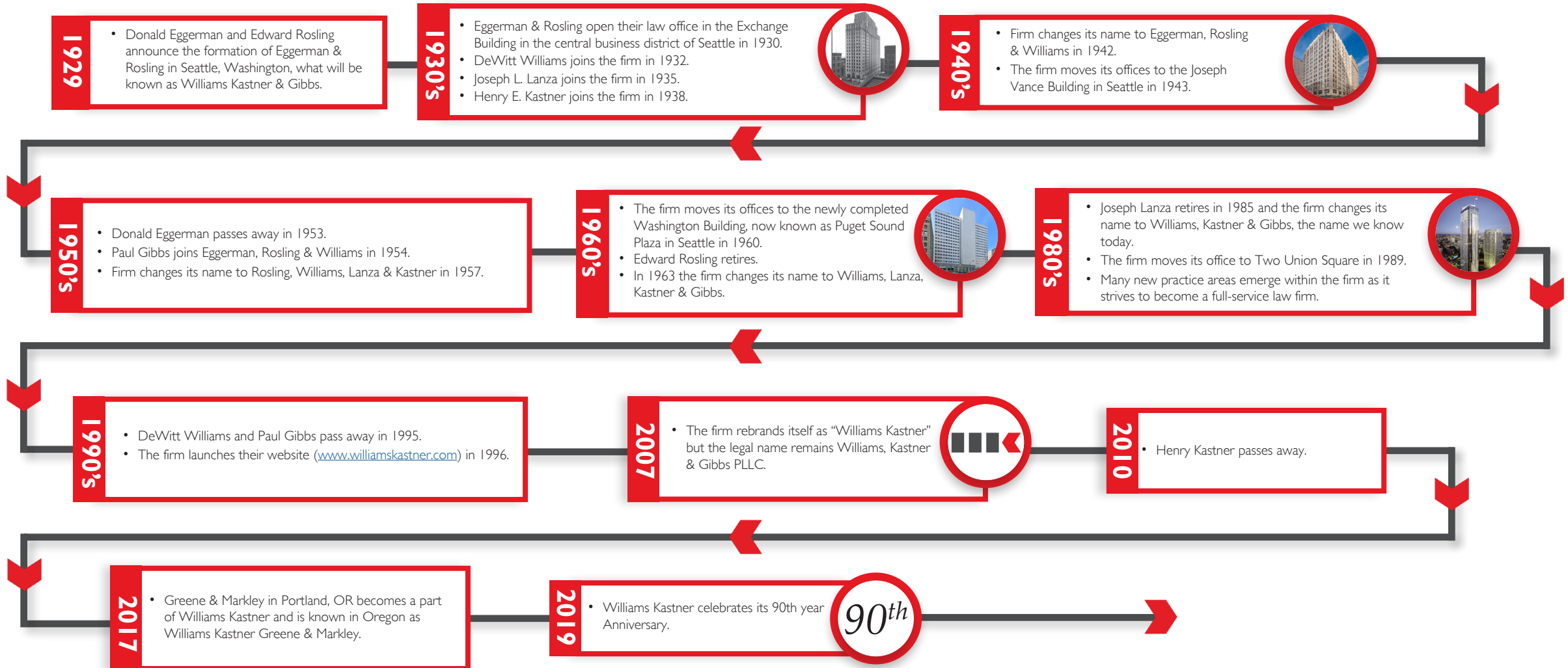


Williams, Kastner & Gibbs traces its origins to 1929 when founders Donald G. Eggerman and Edward L. Rosling announced the formation of Eggerman & Rosling in Seattle, Washington.

Donald Eggerman and Edward Rosling were colleagues at a firm known as Bausman, Oldham, Bullitt & Eggerman in Seattle. In 1929 Donald, a Partner and Edward, an Associate, left the firm and started a new firm that would become Williams Kastner & Gibbs. The firm initially provided legal services to Seattle's timber, shipping and manufacturing industries but over time became a full-service firm in the Pacific Northwest with offices in Seattle and Portland.



FOUNDING ATTORNEYS



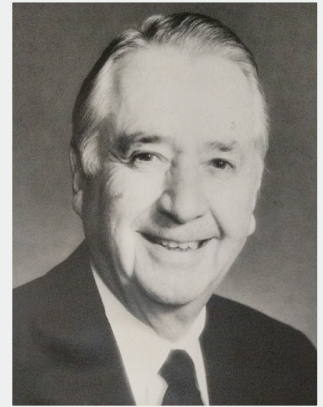
DONALD EGGERMAN

Founded the firm in
1929



EDWARD ROSLING

Founded the firm in
1929



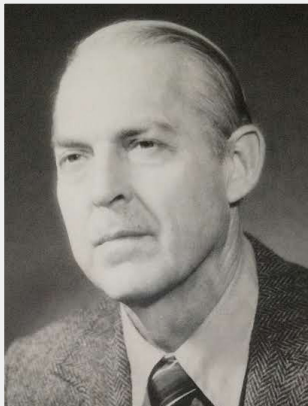
DEWITT WILLIAMS

Joined the firm in
1932



JOSEPH LANZA

Joined the firm in
1935



HENRY KASTNER

Joined the firm in
1938



PAUL GIBBS

Joined the firm in
1954